



Four cylinder, four cycle smoothness in a lightweight, compact engine.

A generation of marine diesel engines.

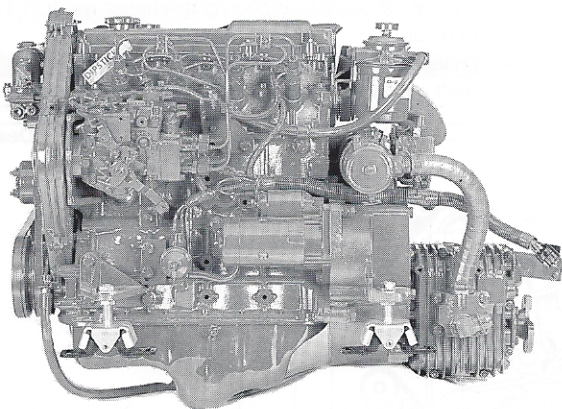
The Westerbeke 55A Four is rated at 55 Horsepower (41 KW) at 3600 RPM. It is specifically designed for auxiliary sailboats ranging from 40-45 feet in length.

The Westerbeke 55A Four is a state of the art four cylinder, four cycle, naturally aspirated, 2.2 liter engine. An oversized transmission, self-bleeding fuel system, 50 ampere battery charging alternator, domestic hot water heater connections, oil change hose and lube oil cooler in the fresh water circuit are just a few of the many desirable features that are standard on this engine. For installation, it is equipped with Westerbeke's new fail safe isolators which have been matched to the engine for optimum vibration control and noise reduction. The mounts are adjustable and have a slotted mounting base for easy alignment of the engine to the propeller shaft.

Many optional accessories are available including large single and dual output battery charging alternators and refrigeration compressor mounts. Factory engineered and factory installed, an owner or builder benefits from these complete and properly designed systems.

The Westerbeke 55A Four is extremely compact with dimensions of 35.2 inches long, 23.7 inches wide and an overall height of 26.8 inches. The total weight of the unit is only 470 pounds, a low 8.5 pounds per horsepower.

Westerbeke products are supported by a worldwide network of over 65 master distributors and their dealers providing parts, service and technical support in over 65 countries around the world.

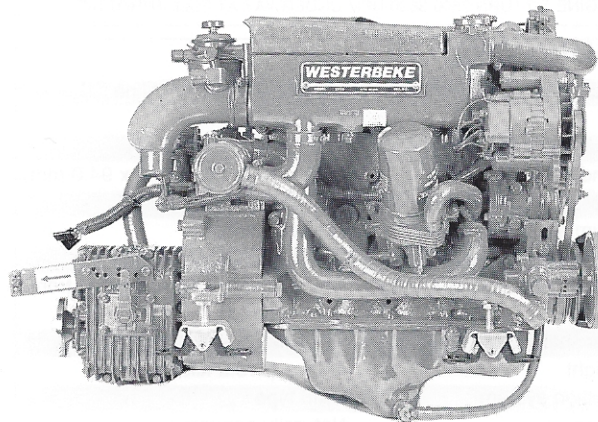


55A Four
Diesel Engine

Dimensions

Length	35.2" (894.1 mm)
Width	23.7" (602.0 mm)
Height	26.8" (680.7 mm)
Weight	470 lbs. (213.2 kilos)

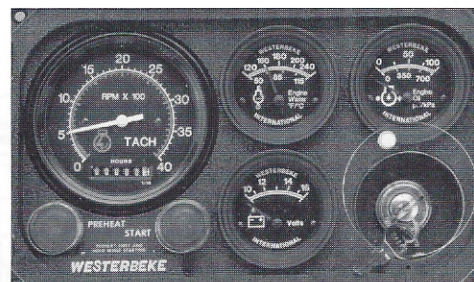
See other side for more dimension information



55A Four
Diesel Engine

Standard Features

- Fresh water cooling
- Engine prewired to plug-in connector
- Self-bleeding fuel system
- 12 Volt, 50 ampere alternator
- Domestic hot water connection
- Coolant recovery tank
- Throttle, stop, and shift control brackets
- Low oil pressure and high water temperature alarms
- Belt-driven raw water pump
- Oversized marine transmission with 2.6:1 reduction
- Transmission oil cooler
- Glow plug cold starting aid
- Engine matched four-point adjustable mounts
- Lube oil drain hose
- Fresh water lube oil cooler
- Circuit breaker protected electrical system
- Operators' manual and parts list
- "CE" Mark

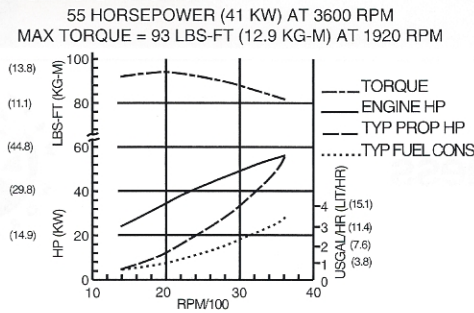


Optional Admiral Panel

Admiral Panel Dimensions

Length	9.75" (247.7 mm)
Depth	4.0" (101.6 mm)
Height	6.0" (152.4 mm)

Performance Data



WESTERBEKE RECOMMENDS A PROPELLER THAT WILL ALLOW THE ENGINE TO TURN 3500-3600 RPM UNDERWAY AT FULL THROTTLE

Specification

Number of cylinders	4 Cylinder vertical in-line
Cycles	4 Cycle
Displacement	133.2 cu. in. (2.18 liter)
Bore and stroke	3.38 x 3.70" (86.0 mm x 94.0 mm)
Compression ratio	22.7:1
Maximum angle of installation	Not to exceed 14°
Maximum angle of rotation	Not to exceed 25°
Crankshaft, direction of rotation	Counterclockwise as viewed from flywheel end
Propeller shaft, direction of rotation	Right hand – std. trans.
Dry weight	470lbs (213.2 kilos)
Combustion system	Swirl type
Aspiration	Naturally aspirated
Lubrication system	Forced lubrication by gear pump
Cooling system	9.5 quarts (9 liters)
Starting aid	12 volt sheathed type glow plug
Engine stop	Electric
Fuel injection pump	Bosch type
Governor	Centrifugal type
Injectors	Throttle type
Fuel filter	Full flow, spin-on element
Lube oil filter	Full flow, spin-on element
Lubricant capacity	1.75 US gal (6.6 liters)
Lube oil cooler	Fresh water cooled
Fuel transfer pump	Electrical
Fuel supply and return piping	1/4" ID (6.35 mm) minimum 3/8" ID (9.53 mm) maximum
Starting motor	12 volt, solenoid, actuated shift
Battery charging alternator	50 ampere (12 volts)
Cold cranking amps	250-300 amps
Electrical system	12 volts DC, negative ground

Construction – Engine Components

Cylinder head	Cast Iron
Cylinder block	Cast Iron
Crankshaft	Forged crankshaft, five main bearings
Valves	Direct drive overhead cam
Fuel System	Self bleeding
Intake system	Intake silencer with air filters for maximum noise reduction
Cooling system	Fresh water-cooled with oversized tube and shell type heat exchanger
Exhaust manifold	Cast aluminum, fresh water-cooled with built-in expansion tank

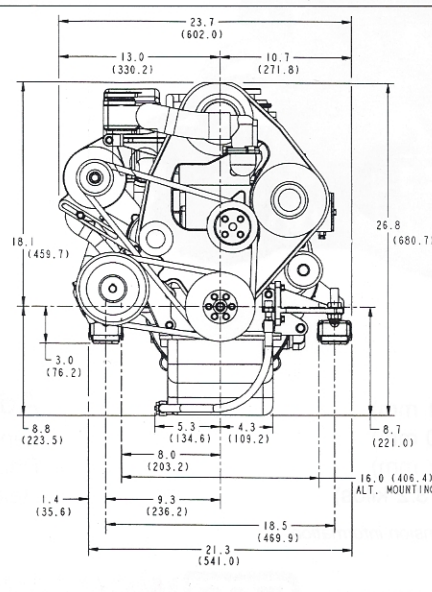
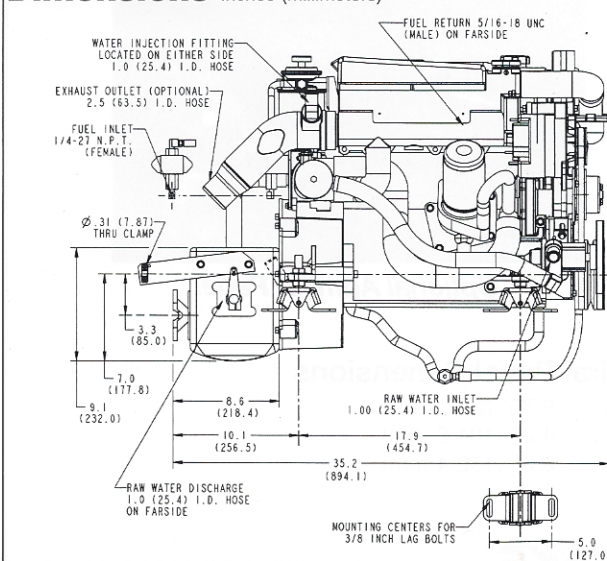
Standard Equipment

Standard gear ratio	2.6:1
Mounting centers	16.0" & 18.5"
Flexible mounts	Engine matched adjustable fail safe neoprene type
Domestic hot water connection	
Coolant recovery tank	
Battery charging alternator	50 amp, 12 volt
Starting aid	
Control brackets	Throttle and shift
Prewired Engine	
Belt-driven sea water pump	
Lube oil cooler in fresh water system	
Lube oil drain hose	
Transmission oil cooler	
Oil fill	Top
Circuit breaker protected electrical system	
Operator's Manual and Parts List	

Optional Equipment

Captain panel with alarm (tachometer with lights)	
Admiral panel with alarms (tachometer with gauges)	
Dual station senders	
Other gear ratios	Consult local Distributor
Hydraulic transmissions	Consult local Distributor
Remote expansion tank	
Provision for refrigeration compressor	
Muffler and fittings	
"A" and "B" on board spare parts kits	
Alternator, 90 amp single output; 135, 160, 190 dual output	
Anti-siphon valve for overboard cooling discharge water	
Technical Manual	
Exhaust connection (water injected 70° elbow)	
Propeller shaft couplings (rigid/flexible) – available standard sizes	

Dimensions Inches (millimeters)



Authorized Dealer